







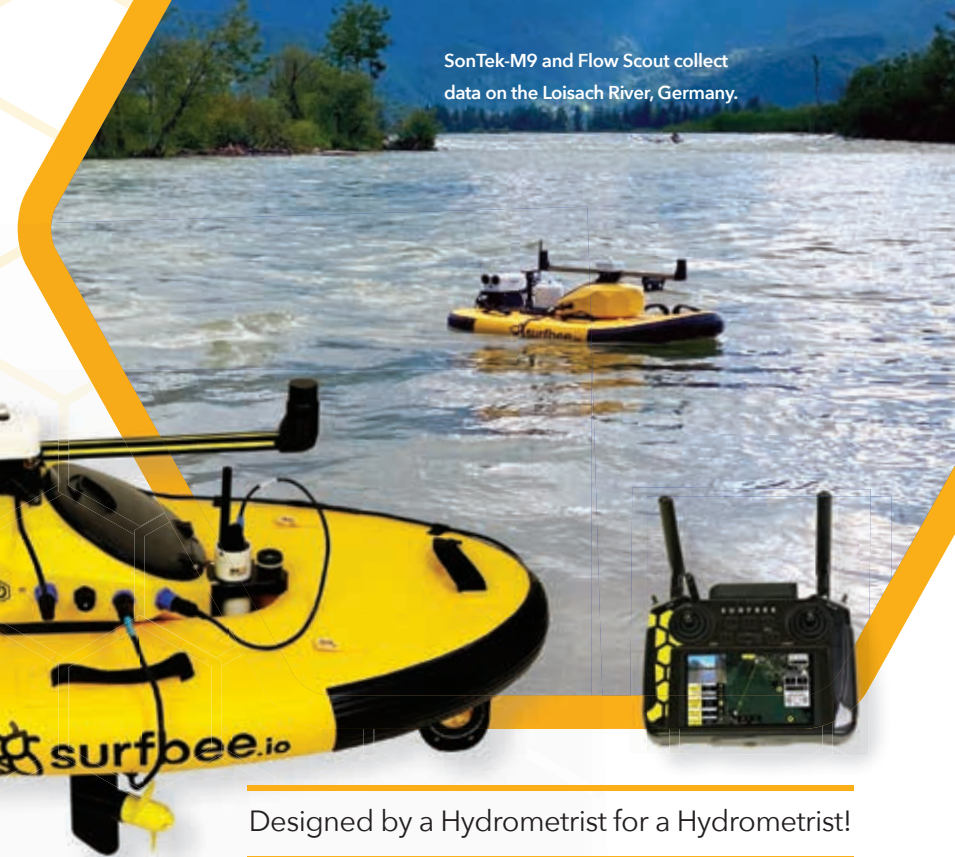
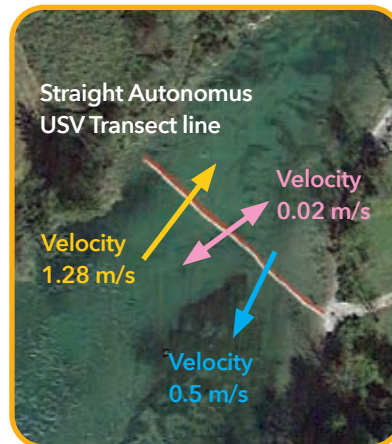
# A NEW STANDARD IN ENVIRONMENTAL WATER MONITORING

-  **Three models** designed for the SonTek-M9 or RS5 ADCPs
-  **Flexible use** for bathymetry, discharge and current profiling
-  **Precision controlled**, improving data transect repeatability and backflow data collection
-  **Applicable for both** moving boat or stationary methods
-  **Dual GNSS** (aka GPSCompass) for reliable heading - an industry first!
-  **Coming soon:** vertical winch profiling and water quality sampling with YSI's EXO sonde!

Interested in learning more about the Surfbee?  
We are here to help!

Xylem Europe  
Environmental Solutions  
Mail: [surfbee-europe@xylem.com](mailto:surfbee-europe@xylem.com)

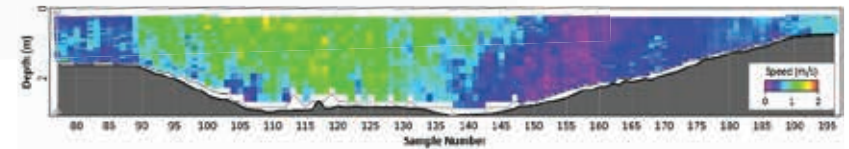
**PRECISE BOAT MOVEMENT  
NO MATTER THE WATER  
DIRECTION**



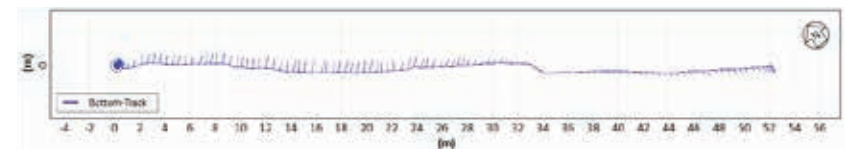
SonTek-M9 and Flow Scout collect data on the Loisach River, Germany.

Designed by a Hydrometrist for a Hydrometrist!

VELOCITY CONTOUR PLOT



STRAIGHT TRANSECT LINE IN HIGHLY VARIABLE WATER VELOCITY



DIRECTIONAL VELOCITY PLOT

